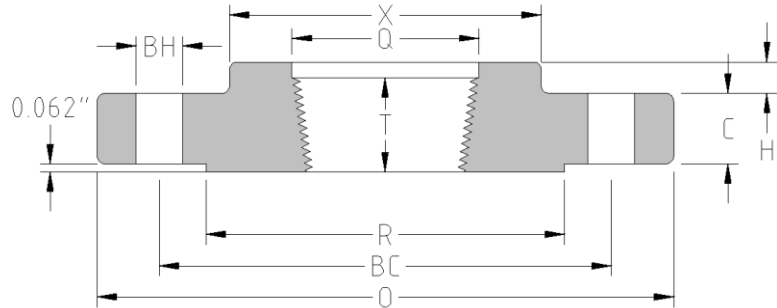




Reducing Threaded
Flange
CLASS 150
Inches / Pounds



Nominal Pipe Size	Outside Diam. of Flange (O)	Thick. of Flange (C)	Diam. of Raised Face (R)	Min. Counter Bore (Q)	Min Red. Size Requiring Hub*	No. of Holes	Diam. of Holes	Diam. of Bolts	Diam. of Bolt Circle	Approx. Weight (in Pounds)
1/2	3.50	0.38	1.38	—	All	4	0.62	0.50	2.38	1
3/4	3.88	0.44	1.69	—	All	4	0.62	0.50	2.75	2
1	4.25	0.5	2.00	—	1/2	4	0.62	0.50	3.12	2
1 1/4	4.62	0.56	2.50	—	1/2	4	0.62	0.50	3.50	3
1 1/2	5.00	0.63	2.88	—	1/2	4	0.62	0.50	3.88	3
2	6.00	0.69	3.62	—	1	4	0.75	0.62	4.75	5
2 1/2	7.00	0.82	4.12	—	1 1/4	4	0.75	0.62	5.50	7
3	7.50	0.88	5.00	—	1 1/4	4	0.75	0.62	6.00	8
3 1/2	8.50	0.88	5.50	—	1 1/2	8	0.75	0.62	7.00	11
4	9.00	0.88	6.19	—	1 1/2	8	0.75	0.62	7.50	13
5	10.00	0.88	7.31	—	1 1/2	8	0.88	0.75	8.50	15
6	11.00	0.94	8.50	—	2 1/2	8	0.88	0.75	9.50	19
8	13.50	1.06	10.62	—	3	8	0.88	0.75	11.75	30
10	16.00	1.13	12.75	—	3 1/2	12	1.00	0.88	14.25	43
12	19.00	1.19	15.00	—	3 1/2	12	1.00	0.88	17.00	64

*** When hub is required then use the dimension X and Y dimensions. See next page for hub requirements. Counter Bore is not required for class 150. Dimensions conform to ASTM A/SA-105; ASME B16.5**



Reducing Threaded Flange **CLASS 150** *Continued*

Reducing Flange Hub Chart

Flange Nominal Pipe Size	Reducing Size															
	1/4	3/8	1/2	3/4	1	1 1/4	1 1/2	2	2 1/2	3	3 1/2	4	5	6	8	10
1/2																
3/4																
1																
1 1/4																
1 1/2																
2																
2 1/2																
3																
3 1/2																
4																
5																
6																
8																
10																
12																

Reducing Nominal Pipe Size	Min. Diam. of Hub at Base (X)**	Min Heigh of Hub at Base (H)**	Min. Thread Length (T)
1/2	1.38	0.24	0.62
3/4	1.69	0.18	0.62
1	2.00	0.19	0.69
1 1/4	2.50	0.25	0.81
1 1/2	2.88	0.25	0.88
2	3.62	0.31	1.00
2 1/2	4.12	0.30	1.12
3	5.00	0.31	1.19
3 1/2	5.50	0.37	1.25
4	6.19	0.43	1.31
5	7.31	0.56	1.44
6	8.50	0.62	1.56
8	10.62	0.69	1.75
10	12.75	0.81	1.94

** When required by ASME B16.5. At the purchaser's option they may approve the machining of a blind flange to make a reducing threaded flange.



SERVICE METAL
Trust In Every Connection

MASTER DISTRIBUTOR OF
PIPE FITTINGS & VALVES

